

MONTHLY MEMBERSHIP PROGRESS REPORT

LOCATION NEPAL

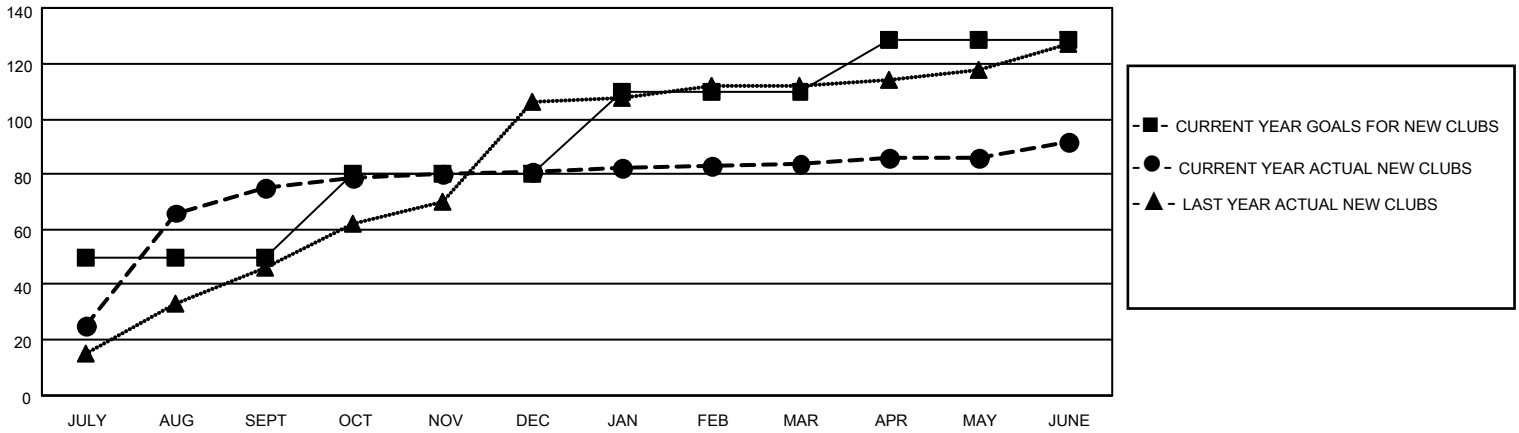
District 325B1

Results as of: 6/30/2022

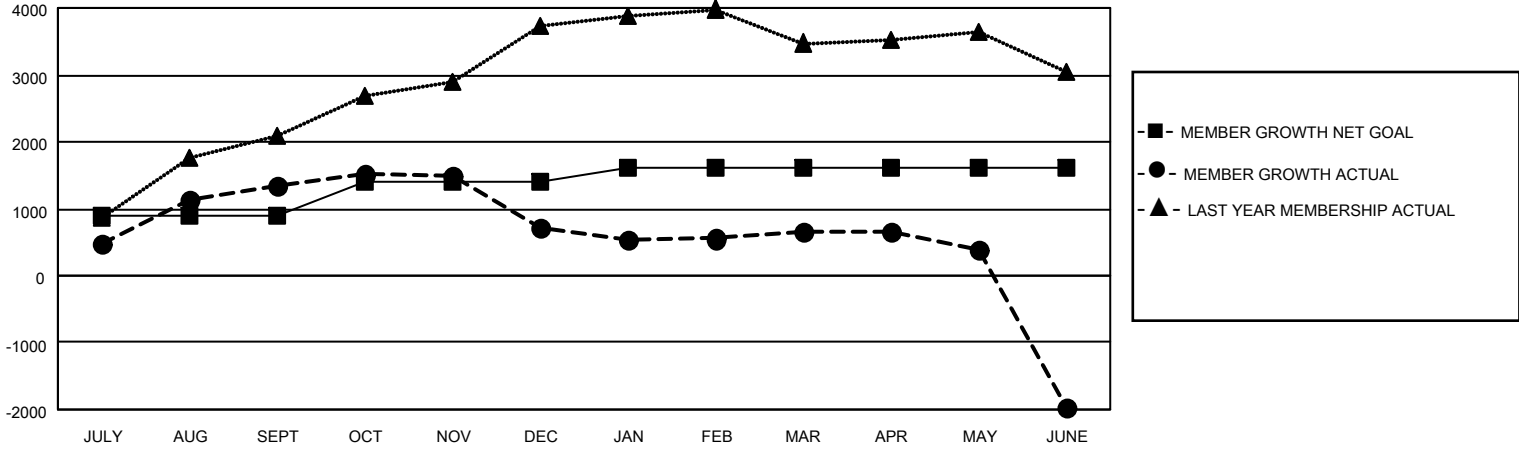
Clubs			
RESULTS FOR 2021-2022			
QUARTER	NEW CLUB GOAL	NEW CLUBS	DROPPED CLUBS
JULY/AUG/SEPT	50	75	12
OCT/NOV/DEC	30	6	14
JAN/FEB/MAR	30	3	9
APR/MAY/JUNE	19	8	46

Members			
RESULTS FOR 2021-2022			
QUARTER	MEMBER GROWTH NET GOAL	MEMBER GROWTH ACTUAL	DROPPED MEMBERS ACTUAL (including transfers)
JULY/AUG/SEPT	900	2045	682
OCT/NOV/DEC	500	531	1,160
JAN/FEB/MAR	200	471	478
APR/MAY/JUNE	25	901	3,470

GOALS AND ACTUAL NEW CLUBS CUMULATIVE



GOALS AND ACTUAL MEMBERS CUMULATIVE



DROPPED CLUBS: 81

412 CLUBS OF 665 ADDED 1 OR MORE NEW MEMBERS

GENDER DISTRIBUTION

MALE	9,254 (70.43%)
FEMALE	3,885 (29.57%)
NON BINARY	0 (0.00%)
PREFER NOT TO ANSWER	0 (0.00%)

DROPPED MEMBERS

[CLICK HERE FOR CUMULATIVE MEMBERSHIP DATA](#)

DECEASED	12
CLUB CANCELLED	1,551
OTHER	4,227
TOTAL	5,790

TOTAL FAMILY UNIT MEMBERS	11,189
FAMILY MEMBERS PAYING HALF DUES	7,980